



Contents:

3 x 50g balls of Caline:
2.5 mm circular needles
A strand of contrast colour
yarn for embroidery
Buttons
Press studs
Soles
Pattern

Jacket & Shoes

Sizes : 1 mth - 3 mths - 6 mths

Abbreviations

Sl 1: Slip the next stitch as if to purl with yarn at **back** of work.

Stitches Used

GARTER STITCH (G-ST), using 2.5 mm needles.
Knit every row.

Tension/Gauge

To achieve a good result it is essential to make a tension square (see Check Your Tension instructions at beginning of one of our books).

27 sts & 54 rows over G-st using 2.5 mm needles = 10 cm (4 in) square.

To Make

JACKET:

Made in one piece starting with left front. The arrows on the diagram indicate the direction of work.

LEFT FRONT:

Cast on **59-65-72** sts. Work in G st for 5 rows, thread a contrast colour yarn into the last st in the 5th row to mark the neck edge.

When work measures **6-6-6.5** cm (**2¼-2¼-2½** in) [**32-32-34** rows] total cont next RS row as foll:

(Here you will be reducing how many sts you work in each row)

1 mth:

Next row (RS): k58, turn, yon, sl 1, work to end.
Next row (RS): k56, turn, yon, sl 1, work to end.
Next row (RS): k55, turn, yon, sl 1, work to end.
Next row (RS): k53, turn, yon, sl 1, work to end.
Next row (RS): k52, turn, yon, sl 1, work to end.
Next row (RS): k50, turn, yon, sl 1, work to end.
Next row (RS): k49, turn, yon, sl 1, work to end.
Next row (RS): k47, turn, yon, sl 1, work to end.
Next row (RS): k46, turn, yon, sl 1, work to end.
Next row (RS): k44, turn, yon, sl 1, work to end.
Next row (RS): k42, turn, yon, sl 1, work to end.
Next row (RS): k41, turn, yon, sl 1, work to end.
Next row (RS): k39, turn, yon, sl 1, work to end.
Next row (RS): k37, turn, yon, sl 1, work to end.
Next row (RS): k36, turn, yon, sl 1, work to end.
Next row (RS): k34, turn, yon, sl 1, work to end.
Next row (RS): k32, turn, yon, sl 1, work to end.

3 mths:

Next row (RS): k64, turn, yon, sl 1, work to end.
Next row (RS): k62, turn, yon, sl 1, work to end.
Next row (RS): k61, turn, yon, sl 1, work to end.
Next row (RS): k59, turn, yon, sl 1, work to end.
Next row (RS): k58, turn, yon, sl 1, work to end.
Next row (RS): k56, turn, yon, sl 1, work to end.
Next row (RS): k55, turn, yon, sl 1, work to end.
Next row (RS): k53, turn, yon, sl 1, work to end.
Next row (RS): k52, turn, yon, sl 1, work to end.
Next row (RS): k50, turn, yon, sl 1, work to end.
Next row (RS): k49, turn, yon, sl 1, work to end.
Next row (RS): k47, turn, yon, sl 1, work to end.
Next row (RS): k45, turn, yon, sl 1, work to end.
Next row (RS): k44, turn, yon, sl 1, work to end.
Next row (RS): k42, turn, yon, sl 1, work to end.
Next row (RS): k40, turn, yon, sl 1, work to end.
Next row (RS): k39, turn, yon, sl 1, work to end.
Next row (RS): k37, turn, yon, sl 1, work to end.
Next row (RS): k35, turn, yon, sl 1, work to end.

6 mths:

Next row (RS): k70, turn, yon, sl 1, work to end.
Next row (RS): k68, turn, yon, sl 1, work to end.
Next row (RS): k67, turn, yon, sl 1, work to end.
Next row (RS): k65, turn, yon, sl 1, work to end.
Next row (RS): k64, turn, yon, sl 1, work to end.
Next row (RS): k62, turn, yon, sl 1, work to end.
Next row (RS): k61, turn, yon, sl 1, work to end.
Next row (RS): k59, turn, yon, sl 1, work to end.
Next row (RS): k58, turn, yon, sl 1, work to end.
Next row (RS): k56, turn, yon, sl 1, work to end.
Next row (RS): k55, turn, yon, sl 1, work to end.
Next row (RS): k53, turn, yon, sl 1, work to end.
Next row (RS): k52, turn, yon, sl 1, work to end.
Next row (RS): k50, turn, yon, sl 1, work to end.
Next row (RS): k49, turn, yon, sl 1, work to end.
Next row (RS): k47, turn, yon, sl 1, work to end.
Next row (RS): k46, turn, yon, sl 1, work to end.
Next row (RS): k44, turn, yon, sl 1, work to end.
Next row (RS): k43, turn, yon, sl 1, work to end.
Next row (RS): k41, turn, yon, sl 1, work to end.
Next row (RS): k40, turn, yon, sl 1, work to end.

The left front is now complete.

Next row (RS): Cast off **31-34-39** sts, slip the stitch on your right needle back onto your left needle.

LEFT SLEEVE:

Cast on **31-37-42** new stitches. **K32-38-43** sts.

(Here you will be increasing the number of sts worked in each row until all sts are being worked)

All sizes

***Next row (WS):** turn, yon, sl 1, work to end.

Next row (RS): Work along row to the 1st

yon, then knit together the 2 yon with the following stitch (i.e. k3tog), then work to next yon.*
Rep from *to* until all sts are back in use.

Cont on the **59-68-75** sts obtained for **4.5-5-5.5** cm (1½-2-2¼ in) [24-28-30 rows]. Then leave sts unworked at the end of rows as you did for Left Front (blue section).

The left sleeve is now complete.

Next row (RS): Cast off **31-34-39** sts, slip the stitch on your right needle back onto your left needle.

BACK:

Cast on **31-37-42** new stitches. **K32-38-43** sts.

Then pick up unworked sts at the end of rows as you did for Left Sleeve (green section).

Cont on the **59-65-72** sts obtained for **7.5-8-8.5** cm (3-3¼-3½ in) [40-44-46 rows]. Then leave sts unworked at the end of rows as you did for Left Front (blue section).

The Back is now complete.

Next row (RS): Cast off **31-34-39** sts, slip the stitch on your right needle back onto your left needle.

RIGHT SLEEVE:

Cast on **31-37-42** new stitches. **K32-38-43** sts.

Then pick up unworked sts at the end of rows as you did for Left Sleeve (green section).

Cont on the **59-65-72** sts obtained for **4.5-5-5.5** cm (1½-2-2¼ in) [24-28-30 rows]. Then leave sts unworked at the end of rows as you did for Left Front (blue section).

The Right Sleeve is now complete.

Next row (RS): Cast off **31-34-39** sts, slip the stitch on your right needle back onto your left needle.

RIGHT FRONT:

Cast on **31-37-42** new stitches. **K32-38-43** sts.

Then pick up unworked sts at the end of rows as you did for Left Sleeve (green section).

Cont on the **59-65-72** sts obtained for approx **6-6-6.5** cm (2¼-2¼-2½ in) [31-31-33 rows]

Then cast off all sts knitwise on the WS of work.

FINISHING:

Sew the side & sleeve seams.

Following **diagram No 1:**

- Using a contrast colour thread embroider crosses on front & back.
- At the top of each front fold 5 cm down to form lapel & sew a button to each end through the 2 sections.
- Sew the concave section of the press studs to the WS of the right front, then the other section to the RS of the left front, 4 cm (1½ in) from the edge.
- Secure & weave in all ends.

SHOES (SIZES 3/6 MTHS):

RIGHT SHOE:

Cast on **75** sts. Work in G-st for **10** rows.

Then work as foll:

- **K55, k2tog, turn,**
- **SI 1** as if to purl, **k10, k2tog, turn,**
- **SI 1, k10, k2tog, turn,**
- Cont dec until **8** sts rem unworked on left & **33** on right.

Then, **turn**, sl 1, knit to end.

Work **7** rows of G-st on the rem **53** sts.

Next row: k5, *k2tog, k4* rep from *to*.

Work **7** rows on the rem **45** sts.

Next row: k5, *k2tog, k3* rep from *to*.

Work **18** rows of G-st on the rem **37** sts.

Cast off all sts purlwise on WS of work.

LEFT SHOE:

Cast on **75** sts. Work in G-st for **10** rows.

Then work as foll:

- **K30, k2tog, turn,**
- **SI 1** as if to purl, **k10, k2tog, turn,**
- **SI 1, k10, k2tog, turn,**
- Cont dec until **33** sts rem unworked on left & **8** on right.

Then, **turn**, sl 1, knit to end.

Work **7** rows of G-st on the rem **53** sts.

Next row: k5, *k2tog, k4* rep from *to*.

Work **7** rows on the rem **45** sts.

Next row: k5, *k2tog, k3* rep from *to*.

Work **18** rows of G-st on the rem **37** sts.

Cast off all sts purlwise on WS of work.

FINISHING:

Right shoe:

Follow **diagram No. 2**, pin the cast on row (red line) to the interior of the sole, overlapping 1.5 cm (½ in) of the left edge over the right edge (= outside edge of shoe).

Then, sew together using cross stitch.

Sew on buttons through the 2 layers.

Fold the top of the cuff to the RS.

Left shoe:

As the right show **but** overlap the right edge over the left edge (= outside edge of shoe).

Secure & weave in all ends.



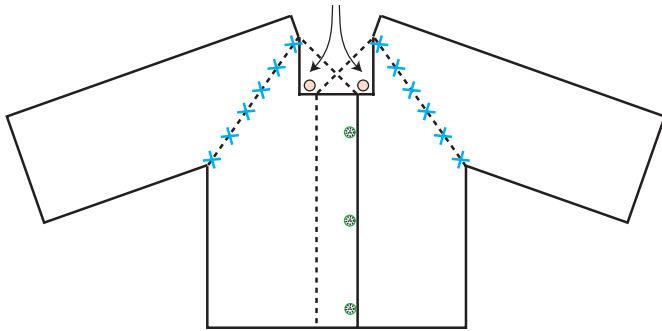


DIAGRAM 1

- X = Strand of contrast yarn embroidery
- = Button
- * = Concave section of press stud on WS of right front
- = Convex section of press stud on RS of left front

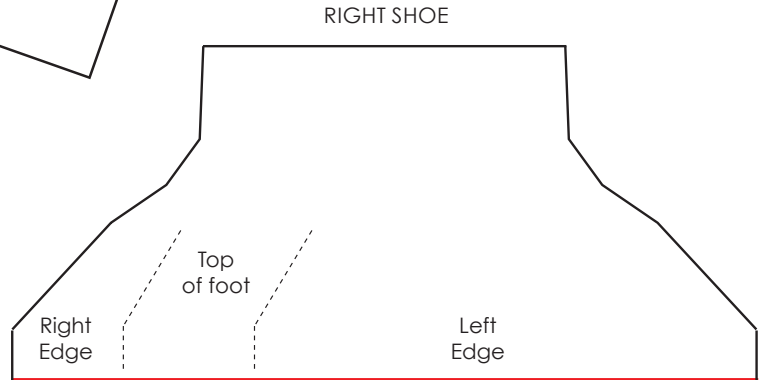
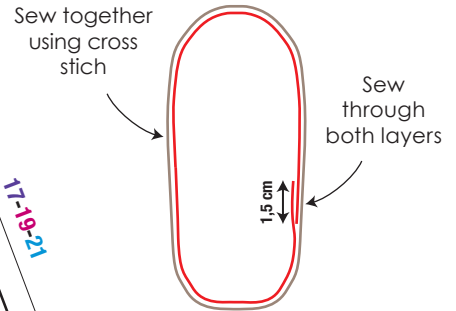
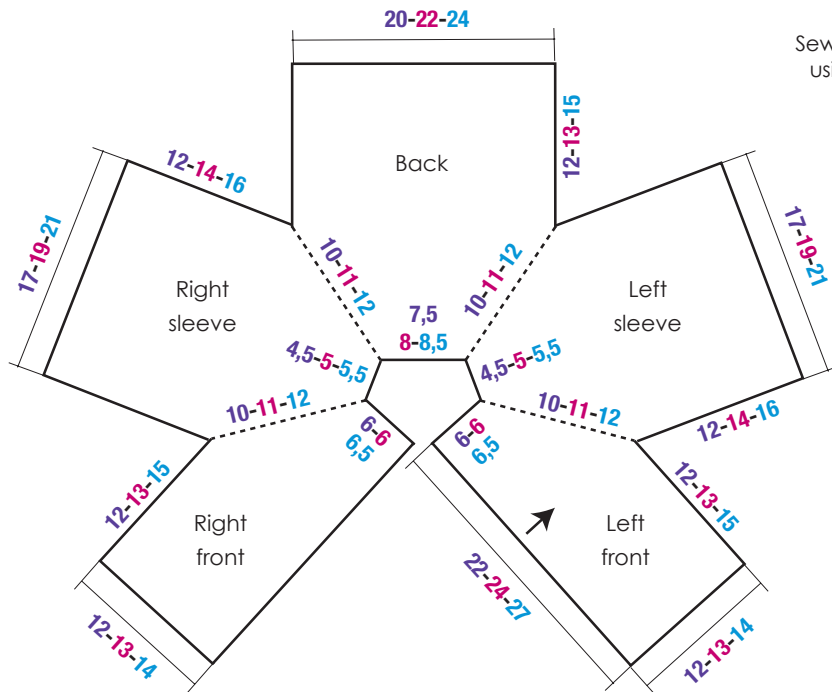


DIAGRAM 2



ASSEMBLE OF THE SOLE ON THE RIGHT SHOE